

FFC

Safety Performance

by

Sikander Khan

Site Location



Plant View at Night



Plant View



COMPANY INTRODUCTION

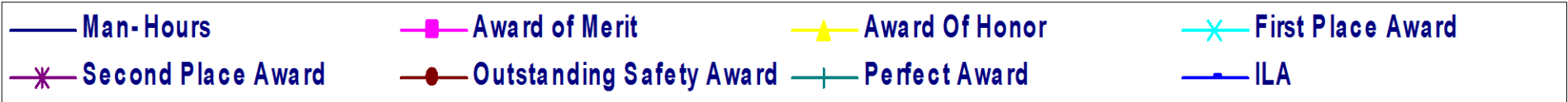
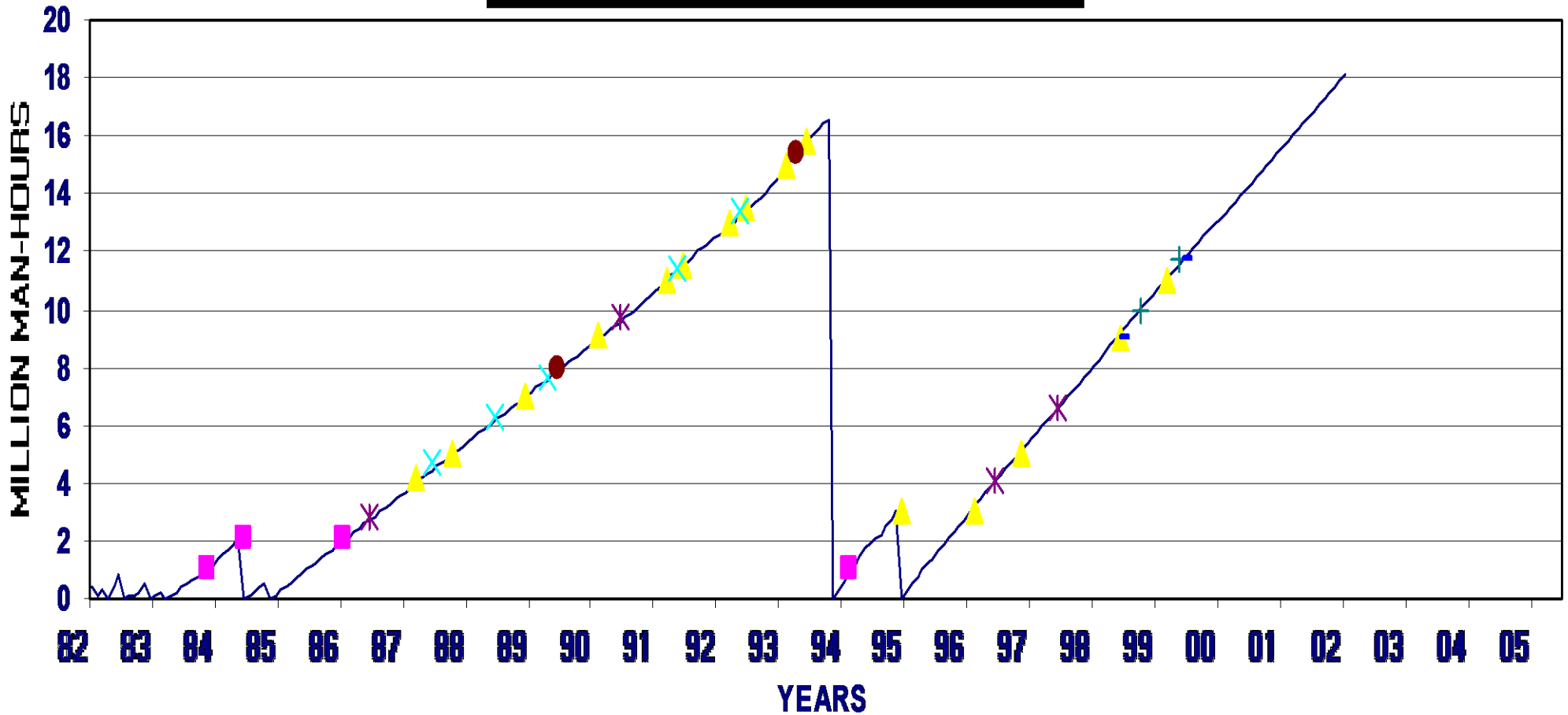
- **LEADING UREA MANUFACTURER (60% MARKET SHARE).**

- **THREE PLANTS:**

		DESIGN	REVAMP
- BASE UNIT	1982	1725 MTPD	2105 MTPD
- EXPANSION UNIT	1993	1925 MTPD	
- PAK SAUDI FERT.	1980	1740 MTPD	

- **ISO-9002 CERTIFIED FOR MANUFACTURING DIVISION.**

SAFETY PERFORMANC
MAN-HOURS WITHOUT INJURY
(AWARDS FROM NATIONAL SAFETY COUNCIL, USA)



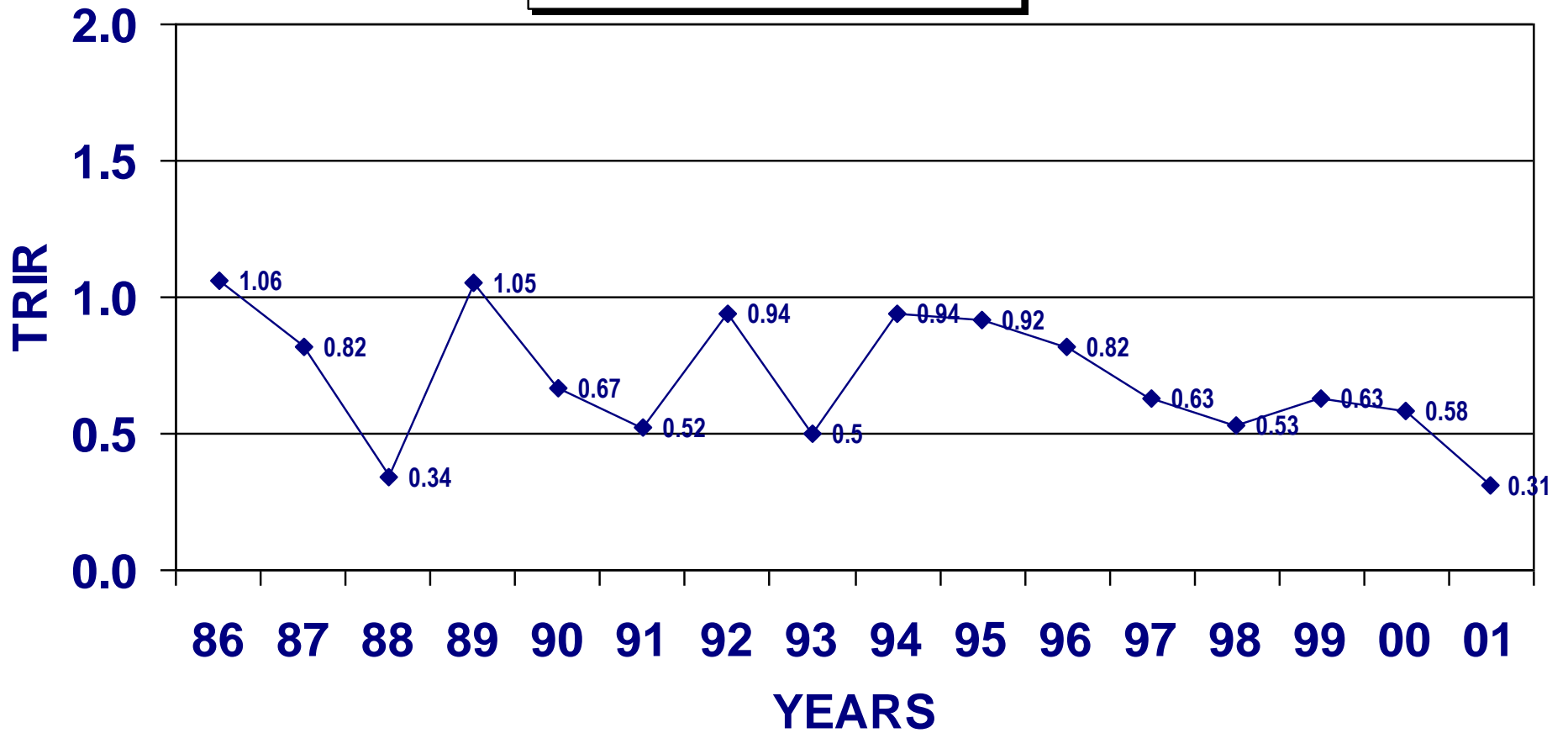
Excellent Safety Performance

- Safe operation Record
18.14 Million Man-hours
- Awards by National safety Council, U.S.A

Description	No. of Awards Received
Award of Honour	15
First Place Award	05
Second Place Award	04
Award of Merit	04
Outstanding Safety Award	02

Trir Trend

Upto December 2001



TRIR= Total Recordable incident Rate

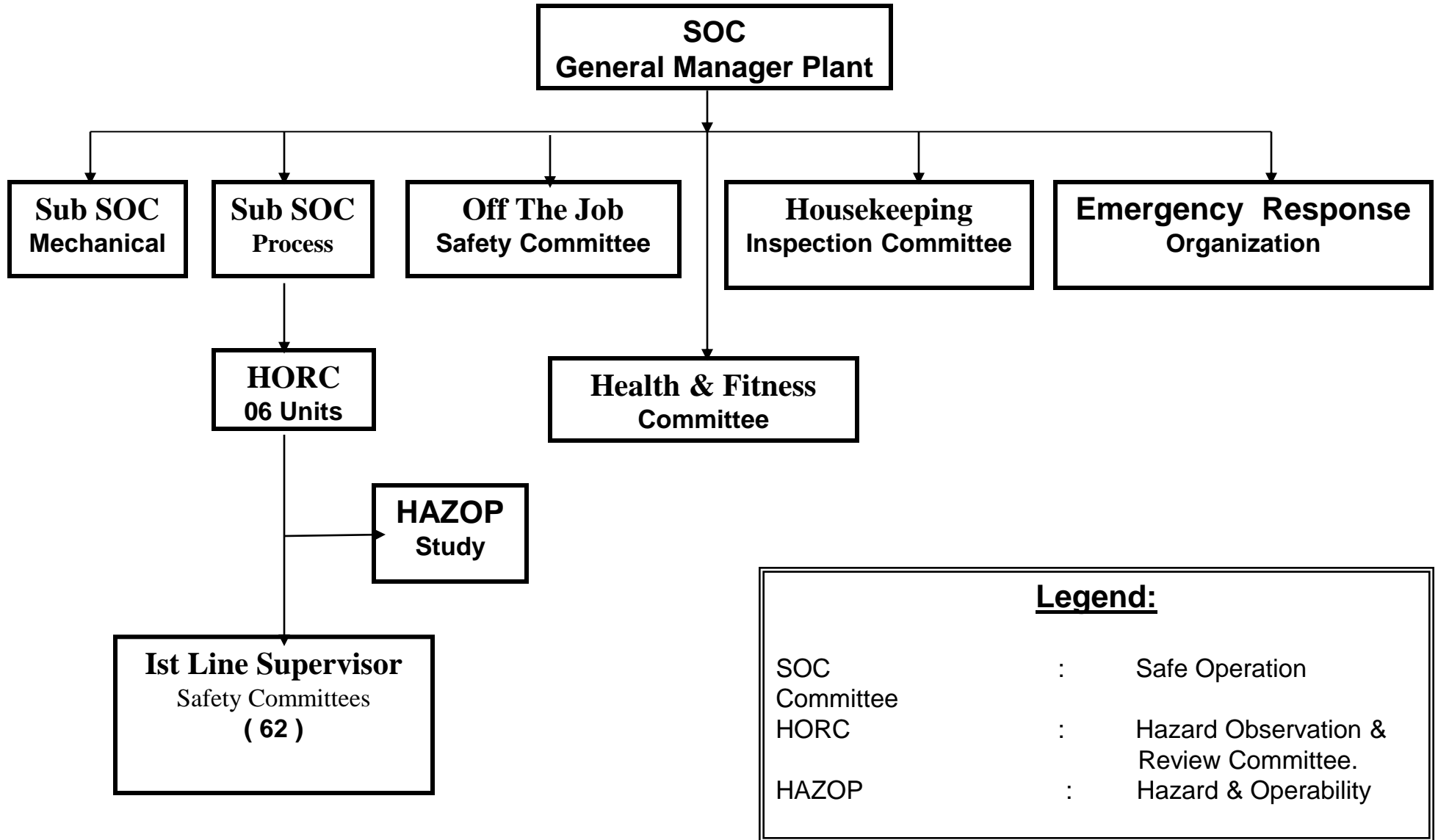
Turnaround Incidents Comparison

Incident	Nearmiss	Injuries	First Aid	Fires	Total Incidents
1992 (BU - FEB)	04	(03+15*) 18	00	06	28
1992 (BU - DEC)	00	(01+04*) 05	00	03	08
1994 (EU - SEP/OCT)	07	(01+06*) 07	00	03	17
1996 (EU - MAR)	09	(01+02*) 03	05	00	17
1996 (BU - JUL/AUG)	08	(02+01*) 03	(01+06*) 07	02	20
1998 (EU - OCT)	02	(01+01*) 02	01	02	07
1999 (BU - APR)	12	(01+05*) 06	08	03	29
2000 (EU - MAR/APR)	27	02*	(04+05*) 09	05	43
2001 (BU - MAR/APR)	12	00	04*	00	16
2002 (EU - MAR)	08	01*	0+19**	00	09

BU = Base Unit, EU = Expansion Unit

* Contractor Incidents ** Honey Bees attack.

Plant Safety Committees



Salient Feature of Safety Program

- Safety policy
- Plant safety rules and regulations
- Housekeeping inspection
- Work permit procedure
- Incident reporting and investigations
- Fire fighting procedure
- Plant emergency plan (disaster)
- Safety incentive scheme
- Plant safety committees
- Training

Work Shop



Work Shop



Reciprocating Compressor



Oil Console



Centrifugal Compressors



Water Pumps



Operators Cabin



Ammonia Storage Tanks

